

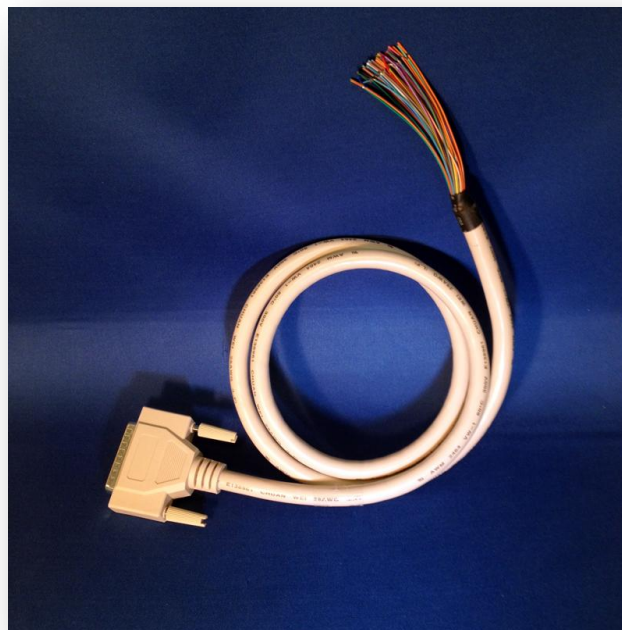


Application Note #2517

CABLE-44-M-Xm

Table of Contents

Description.....	1
Revision Information	2
September 2007 - Present (v4).....	3
Pin-outs	3
March 2006 - September 2007 (v3).....	4
Pin-outs	4
January 2004 – March 2006 (v2)	5
Pin-outs	5
Before January 2004 (v1)	6
Pin-outs	6



Description

The CABLE-44-M-Xm is used to break out the female, 44-pin HD D-sub I/O connectors from our DMC and RIO models to solder-able, flying leads. The “X” in, CABLE-44-M-Xm, refers to the length of the cable in meters; options include 1 and 2 meters. For example, “CABLE-44-M-2m,” would have a cable length of 2 meters and “CABLE-44-M-1m,” would have a cable length of 1 meter.

This application note simply provides the basic pin number to flying-lead color information. For information regarding the pin-out descriptions and how to wire your unit, please refer to your DMC or RIO model's user manual:

<http://www.galilmc.com/support/manuals.php>

Warning: The CABLE-44-M-Xm pin-out and color code are subject to change without notice. Always refer to the pin-out and color code that is shipped with the cable when installing the CABLE-44-M-Xm.

Revision Information

Different revisions of the CABLE-44-M-Xm often have had different color-pin outs and specifications, but not necessarily different revision or part numbers. The following pin-outs and specifications are listed under the dates for which the cables were sold. Please use a combination of the description, picture, and part number to determine if your cable matches. Always use the pin-out provided with your cable to wire your CABLE-44-M-Xm.

September 2007 - Present (v4)

The fourth version of the CABLE-44-M-Xm is RoHS-compliant and comes in a slick, beige sheath, as shown in Figure 1.

Part Number: 89140-03044 REV.-S1



Figure 1: Version 3 of the CABLE-44-M-Xm showing part number and sheath type.

Pin-outs

Pin	Connector	C	S	Pin	Connector	C	S
1	Black			23	Light Blue/Black		
2	White			24	Light Green/Black		
3	Red			25	Pink/Black		
4	Yellow			26	Orange/White		
5	Violet			27	Red/White		
6	Blue			28	Violet/White		
7	Brown			29	Brown/White		
8	Green			30	Green/White		
9	Gray			31	Blue/White		
10	Light Blue			32	Gray/Red		
11	Orange			33	Light Green/Red		
12	Light Green			34	Light Blue/Red		
13	Pink			35	Pink/Red		
14	White/Black			36	Yellow/Red		
15	Red/Black			37	Violet/Red		
16	Yellow/Black			38	Gray/Green		
17	Violet/Black			39	Orange/Green		
18	Green/Black			40	Red/Green		
19	Orange/Black			41	Violet/Green		
20	Blue/Black			42	Brown/Green		
21	Brown/Black			43	Light Blue/Green		
22	Gray/Black			44	Light Green/Green		

Table 1: Version 4 pin-number to flying-lead color pin-out for CABLE-44-M-Xm.
Where **C** is the base cable color and **S** is the cable stripe

March 2006 - September 2007 (v3)

Version 3 cables purchased from March 2006 to September 2007 are RoHS-compliant and have a slick, black sheath as shown in Figure 2 below.

Part Number: 89140-03044 REV.-S1.

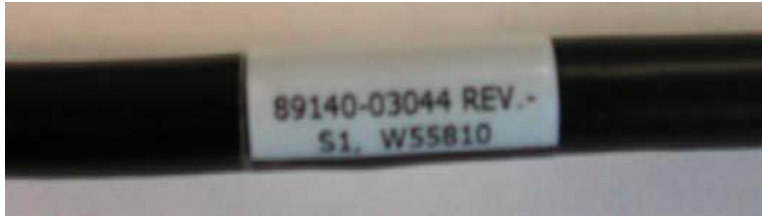


Figure 2: Version 3 of the CABLE-44-M-Xm showing part number and sheath.

Pin-outs

Pin	Connector	C	S	Pin	Connector	C	S
1	Black	Black		23	Green/Black	Green	Black
2	Brown	Brown		24	Gray/Black	Gray	Black
3	Red	Red		25	Pink/Black	Pink	Black
4	Orange	Orange		26	Pink/Red	Pink	Red
5	Yellow	Yellow		27	Pink/Blue	Pink	Blue
6	Green	Green		28	Pink/Green	Pink	Green
7	Blue	Blue		29	Light Blue	Light Blue	
8	Purple	Purple		30	Light Blue/Black	Light Blue	Black
9	Gray	Gray		31	Light Blue/Red	Light Blue	Red
10	White	White		32	Light Blue/Blue	Light Blue	Blue
11	Pink	Pink		33	Light Blue/Green	Light Blue	Green
12	Light Green	Light Green		34	Gray/Red	Gray	Red
13	Black/White	Black	White	35	Gray/Green	Gray	Green
14	Brown/White	Brown	White	36	Purple/Black	Purple	Black
15	Red/White	Red	White	37	Blue/Black	Blue	Black
16	Orange/White	Orange	White	38	Light Green/Black	Light Green	Black
17	Green/White	Green	White	39	Light Green/Red	Light Green	Red
18	Blue/White	Blue	White	40	Light Green/Blue	Light Green	Blue
19	Purple/White	Purple	White	41	Light Green/Green	Light Green	Green
20	Red/Black	Red	Black	42	Light Yellow	Light Yellow	
21	Orange/Black	Orange	Black	43	Light Yellow/Black	Light Yellow	Black
22	Yellow/Black	Yellow	Black	44	Light Yellow/Red	Light Yellow	Red

Table 2: Version 3 pin-number to flying-lead color pin-out for CABLE-44-M-Xm.
Where **C** is the base cable color and **S** is the cable stripe.

January 2004 – March 2006 (v2)

Version 2 cables purchased between January 2004 and March 2006 have a black braided sleeve over a slick, black sheath as shown in Figure 3.

Part Number: 0006-0044 REV.-S1.



Figure 3: Version 2 of the CABLE-44-M-Xm showing part number and sheath.

Pin-outs

Pin	Connector	C	S	Pin	Connector	C	S
1	Black			23	Dark Blue/Black		
2	Black/White			24	Dark Blue/Brown		
3	Brown			25	Purple		
4	Brown/White			26	Purple/White		
5	Red			27	Light Blue		
6	Red/White			28	Light Blue/White		
7	Red/Black			29	Light Blue/Black		
8	Red/Purple			30	Light Blue/ Brown		
9	Orange			31	Silver		
10	Orange/White			32	Silver/White		
11	Orange/Black			33	Pink		
12	Orange/Purple			34	Pink/White		
13	Yellow			35	Pink/Black		
14	Yellow/White			36	Pink/Purple		
15	Yellow/Black			37	White		
16	Yellow/Brown			38	White/Black		
17	Green			39	White/Brown		
18	Green/White			40	White/Red		
19	Green/Black			41	White/Yellow		
20	Green/Purple			42	White/Green		
21	Dark Blue			43	White/Blue		
22	Dark Blue/White			44	White/Purple		

Table 3: Version 2 pin-number to flying-lead color pin-out for CABLE-44-M-Xm
Where **C** is the base cable color and **S** is the cable stripe.

Before January 2004 (v1)

This is the first version of CABLE-44-M-Xm to be released. Cables purchased before January 2004 have a slick, black sheath as shown in Figure 4 below.

Part Number: 0006-0044 REV.-S1



Figure 4: Version 1 of the CABLE-44-M-Xm showing part number and sheath.

Pin-outs

Pin	Connector	C	S	Pin	Connector	C	S
1	White			23	Dark Blue		
2	White/Black			24	Dark Blue/White		
3	Black			25	Dark Blue/Black		
4	Black/White			26	Dark Blue/Brown		
5	Brown			27	Purple		
6	Brown/White			28	Purple/White		
7	Red			29	Silver		
8	Red/White			30	Silver/White		
9	Red/Black			31	White/Brown		
10	Red/Purple			32	White/Orange		
11	Orange			33	White/Yellow		
12	Orange/White			34	White/Green		
13	Orange/Black			35	White/Blue		
14	Orange/Purple			36	White/Purple		
15	Yellow			37	Pink		
16	Yellow/White			38	Pink/White		
17	Yellow/Black			39	Pink/Black		
18	Yellow/Purple			40	Pink/Brown		
19	Green			41	Light Blue		
20	Green/White			42	Light Blue/White		
21	Green/Black			43	Light Blue/Black		
22	Green/Purple			44	Light Blue/Brown		

Table 4: Version 1 pin-number to flying-lead color pin-out for CABLE-44-M-Xm.
Where **C** is the base cable color and **S** is the cable stripe.